

CT40 & CT40 XP MOBILE COMPUTER

Includes the CT40, CT40 HC, CT40 DRH,
CT40 XP, CT40 XP DRH and CT40 XP HC

Accessories Guide

A woman with long brown hair, wearing a light blue button-down shirt and dark blue denim overalls with brown leather straps, is looking down at a black Honeywell mobile computer. She is holding a green jar in her left hand. The background is a blurred grocery store aisle with shelves of products.

Honeywell

TABLE OF CONTENTS

2	Chargers
2	Booted Universal Docks
5	Non-Booted Universal Docks
7	Booted and Non-Booted Universal Docks for Healthcare
7	Battery Version
8	Mobile
9	Power Supply
10	Scan Handles
10	Soft Goods
11	Accessories
11	AC Line Cords

CHARGERS

Booted Universal Docks



CT40-CB-UVB-0

Standard CT40 Booted Charge Base

For recharging up to four computers with protective boot (CT40-PB-00 or CT40-PB-XP). Kit includes 4-bay charger and power supply. Power cord must be ordered separately.



CT40-CB-UVB-1

CT40 Booted Charge Base (U.S.)

For recharging up to four computers with protective boot (CT40-PB-00 or CT40-PB-XP). Kit includes 4-bay charger, power supply and U.S. power cord.



CT40-CB-UVB-2

CT40 Booted Charge Base (EU)

For recharging up to four computers with protective boot (CT40-PB-00 or CT40-PB-XP). Kit includes 4-bay charger, power supply and EU power cord.



CT40-CB-UVB-3

CT40 Booted Charge Base (UK)

For recharging up to four computers with protective boot (CT40-PB-00 or CT40-PB-XP). Kit includes 4-bay charger, power supply and UK power cord.



CT40-NB-UVB-0

Standard CT40 Booted Net Base

For Ethernet communications and recharging up to four computers with protective boot (CT40-PB-00 or CT40-PB-XP). Kit includes net base and power supply. Power cord must be ordered separately.



CT40-NB-UVB-1

CT40 Booted Net Base (U.S.)

For Ethernet communications and recharging up to four computers with protective boot (CT40-PB-00 or CT40-PB-XP). Kit includes net base, power supply and U.S. power cord.



CT40-NB-UVB-2

CT40 Booted Net Base (EU)

For Ethernet communications and recharging up to four computers with protective boot (CT40-PB-00 or CT40-PB-XP). Kit includes net base, power supply and EU power cord.



CT40-NB-UVB-3

CT40 Booted Net Base (UK)

For Ethernet communications and recharging up to four computers with protective boot (CT40-PB-00 or CT40-PB-XP). Kit includes net base, power supply and UK power cord.



CT40-EB-UVB-0

Standard CT40 Booted Ethernet Base

For recharging computer with protective boot (CT40-PB-00 or CT40-PB-XP), battery and Ethernet communications. Kit includes Ethernet home base and power supply. Power cord must be ordered separately. Supports USB client via USB Type B connector.



CT40-EB-UVB-1

CT40 Booted Ethernet Base (U.S.)

For recharging computer with protective boot (CT40-PB-00 or CT40-PB-XP), battery and Ethernet communications. Kit includes Ethernet home base, power supply and U.S. power cord. Supports USB client via USB Type B connector.



CT40-EB-UVB-2

CT40 Booted Ethernet Base (EU)

For recharging computer with protective boot (CT40-PB-00 or CT40-PB-XP), battery and Ethernet communications. Kit includes Ethernet home base, power supply and EU power cord. Supports USB client via USB Type B connector.



CT40-EB-UVB-3

CT40 Booted Ethernet Base (UK)

For recharging computer with protective boot (CT40-PB-00 or CT40-PB-XP), battery and Ethernet communications. Kit includes Ethernet home base, power supply and UK power cord. Supports USB client via USB Type B connector.

CHARGERS, Continued

Booted Universal Docks



CT40-HB-UVB-0

Standard CT40 Booted Home Base

For recharging computer with protective boot (CT40-PB-00 or CT40-PB-XP) and a spare battery. Kit includes home base and power supply. Power cord must be ordered separately. Supports USB client via USB Type B connector.



CT40-HB-UVB-1

CT40 Booted Home Base (U.S.)

For recharging computer with protective boot (CT40-PB-00 or CT40-PB-XP) and a spare battery. Kit includes home base, power supply and U.S. power cord. Supports USB client via USB Type B connector.



CT40-HB-UVB-2

CT40 Booted Home Base (EU)

For recharging computer with protective boot (CT40-PB-00 or CT40-PB-XP) and a spare battery. Kit includes home base, power supply and EU power cord. Supports USB client via USB Type B connector.



CT40-HB-UVB-3

CT40 Booted Home Base (UK)

For recharging computer with protective boot (CT40-PB-00 or CT40-PB-XP) and a spare battery. Kit includes home base, power supply and UK power cord. Supports USB client via USB Type B connector.



CT40-DB-UVB-0

Standard ET40 Booted Display Dock

For recharging computer with protective boot (CT40-PB-00 or CT40-PB-XP), connection with an external display, extending I/O for HDMI, Ethernet communications and three USB ports. Kit includes display base and power supply. Power cord must be ordered separately.



CT40-DB-UVB-1

ET40 Booted Display Dock (U.S.)

For recharging computer with protective boot (CT40-PB-00 or CT40-PB-XP), connection with an external display, extending I/O for HDMI, Ethernet communications and three USB ports. Kit includes display base, power supply and U.S. power cord.



CT40-DB-UVB-2

ET40 Booted Display Dock (EU)

For recharging computer with protective boot (CT40-PB-00 or CT40-PB-XP), connection with an external display, extending I/O for HDMI, Ethernet communications and three USB ports. Kit includes display base, power supply and EU power cord.



CT40-DB-UVB-3

ET40 Booted Display Dock (UK)

For recharging computer with protective boot (CT40-PB-00 or CT40-PB-XP), connection with an external display, extending I/O for HDMI, Ethernet communications and three USB ports. Kit includes display base, power supply and UK power cord.



CT40-CB-PB-0

Standard Charge Base for use with TPU Boot

For recharging up to four computers. Kit includes dock and power supply. Excludes power cord. Compatible with CT40 with TPU boot only.



CT40-CB-PB-1

Charge Base for use with TPU Boot (U.S.)

For recharging up to four computers. Kit includes dock, power supply and U.S. power cord. Compatible with CT40 with TPU boot only.



CT40-CB-PB-2

Charge Base for use with TPU Boot (EU)

For recharging up to four computers. Kit includes dock, power supply and EU power cord. Compatible with CT40 with TPU boot only.



CT40-CB-PB-3

Charge Base for use with TPU Boot (UK)

For recharging up to four computers. Kit includes dock, power supply and UK power cord. Compatible with CT40 with TPU boot only.

CHARGERS, Continued

Booted Universal Docks



CT40-NB-PB-0

Standard Net Base for use with TPU Boot

For Ethernet communications and recharging up to four computers. Kit includes dock and power supply. Excludes power cord. Compatible with CT40 with TPU boot only.



CT40-NB-PB-1

Net Base for use with TPU Boot (U.S.)

For Ethernet communications and recharging up to four computers. Kit includes dock, power supply, and U.S. power cable. Compatible with CT40 with TPU boot only.



CT40-NB-PB-2

Net Base for use with TPU Boot (EU)

For Ethernet communications and recharging up to four computers. Kit includes dock, power supply, and EU power cable. Compatible with CT40 with TPU boot only.



CT40-NB-PB-3

Net Base for use with TPU Boot (UK)

For Ethernet communications and recharging up to four computers. Kit includes dock, power supply and UK power cable. Compatible with CT40 with TPU boot only.

CHARGERS, Continued

Non-Booted Universal Docks



CT40-CB-UVN-0

Standard CT40 Non-Booted Charge Base

For recharging up to four computers only. Kit includes 4-bay charger and power supply. Power cord must be ordered separately.



CT40-CB-UVN-1

CT40 Non-Booted Charge Base (U.S.)

For recharging up to four computers only. Kit includes 4-bay charger, power supply and U.S. power cord.



CT40-CB-UVN-2

CT40 Non-Booted Charge Base (EU)

For recharging up to four computers only. Kit includes 4-bay charger, power supply and EU power cord.



CT40-CB-UVN-3

CT40 Non-Booted Charge Base (UK)

For recharging up to four computers only. Kit includes 4-bay charger, power supply and UK power cord.



CT40-NB-UVN-0

Standard CT40 Non-Booted Net Base

For Ethernet communications and recharging up to four computers (no boots). Kit includes net base and power supply. Power cord must be ordered separately.



CT40-NB-UVN-1

CT40 Non-Booted Net Base (U.S.)

For Ethernet communications and recharging up to four computers (no boots). Kit includes net base, power supply and U.S. power cord.



CT40-NB-UVN-2

CT40 Non-Booted Net Base (EU)

For Ethernet communications and recharging up to four computers (no boots). Kit includes net base, power supply and EU power cord.



CT40-NB-UVN-3

CT40 Non-Booted Net Base (UK)

For Ethernet communications and recharging up to four computers (no boots). Kit includes net base, power supply and UK power cord.



CT40-EB-UVN-0

Standard CT40 Non-Booted Ethernet Base

For recharging computer, battery and Ethernet communications. Kit includes Ethernet home base and power supply. Power cord must be ordered separately. Supports USB client via USB Type B connector.



CT40-EB-UVN-1

CT40 Non-Booted Ethernet Base (U.S.)

For recharging computer, battery and Ethernet communications. Kit includes Ethernet home base, power supply and U.S. power cord. Supports USB client via USB Type B connector.



CT40-EB-UVN-2

CT40 Non-Booted Ethernet Base (EU)

For recharging computer, battery and Ethernet communications. Kit includes Ethernet home base, power supply and EU power cord. Supports USB client via USB Type B connector.



CT40-EB-UVN-3

CT40 Non-Booted Ethernet Base (UK)

For recharging computer, battery and Ethernet communications. Kit includes Ethernet home base, power supply and UK power cord. Supports USB client via USB Type B connector.

CHARGERS, Continued

Non-Booted Universal Docks



CT40-HB-UVN-0

Standard CT40 Non-Booted Home Base

For recharging computer and one spare battery. Kit includes home base and power supply. Power cord must be ordered separately. Supports USB client via USB Type B connector.



CT40-HB-UVN-1

CT40 Non-Booted Home Base (U.S.)

For recharging computer and one spare battery. Kit includes home base, power supply and U.S. power cord. Supports USB client via USB Type B connector.



CT40-HB-UVN-2

CT40 Non-Booted Home Base (EU)

For recharging computer and one spare battery. Kit includes home base, power supply and EU power cord. Supports USB client via USB Type B connector.



CT40-HB-UVN-3

CT40 Non-Booted Home Base (UK)

For recharging computer and one spare battery. Kit includes home base, power supply and UK power cord. Supports USB client via USB Type B connector.



CT40-DB-UVN-0

Standard CT40 Non-Booted Display Dock

For recharging computer, connection with an external display, extending I/O for HDMI, Ethernet communications and three USB ports. Kit includes display base and power supply. Power cord must be ordered separately.



CT40-DB-UVN-1

CT40 Non-Booted Display Dock (U.S.)

For recharging computer, connection with an external display, extending I/O for HDMI, Ethernet communications and three USB ports. Kit includes display base, power supply, and U.S. power cord.



CT40-DB-UVN-2

CT40 Non-Booted Display Dock (EU)

For recharging computer, connection with an external display, extending I/O for HDMI, Ethernet communications and three USB ports. Kit includes display base, power supply, and EU power cord.



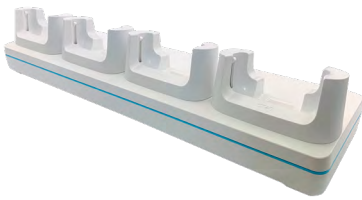
CT40-DB-UVN-3

ECT40 Non-Booted Display Dock (UK.)

For recharging computer, connection with an external display, extending I/O for HDMI, Ethernet communications and three USB ports. Kit includes display base, power supply, and UK power cord.

CHARGERS, Continued

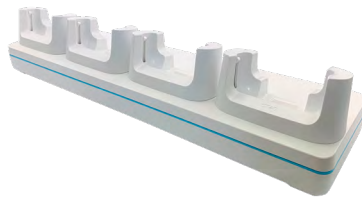
Booted and Non-Booted Universal Docks for Healthcare



CT40-NB-UVB-HCO

Standard CT40 Booted HC Net Base

For Ethernet communications and recharging up to four computers with protective boot. Kit includes 4-bay HC net base and power supply. Power cord must be ordered separately.



CT40-NB-UVN-HCO

Standard CT40 Non-Booted HC Net Base

For Ethernet communications and recharging up to four computers. Kit includes 4-bay HC net base and power supply. Power cord must be ordered separately.



CT40-DB-UVB-HCO

Standard CT40 Booted HC Display Dock

For charging a computer with protection boot, connection with an external display, extending I/O for HDMI, Ethernet communications and three USB ports. Kit includes HC display base and power supply. Power cord must be ordered separately.

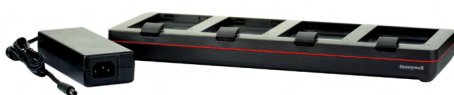


CT40-DB-UVN-HCO

Standard CT40 Non-Booted HC Display Dock

For charging the computer, connection with an external display, extending I/O for HDMI, Ethernet communications and three USB ports. Kit includes HC display base and power supply. Power cord must be ordered separately.

Battery Version



CT40-QBC-0

Standard QBC

For recharging up to four batteries. Kit includes dock and power supply. Power cord must be ordered separately.



CT40-QBC-1

QBC (U.S.)

For recharging up to four batteries. Kit includes dock, power supply and U.S. power cord.



CT40-QBC-2

QBC (EU)

For recharging up to four batteries. Kit includes dock, power supply and EU power cord.



CT40-QBC-3

QBC (UK)

For recharging up to four batteries. Kit includes dock, power supply and UK power cord.

MOBILE



CT40-SN-CNV

CT40 Booted and Non-Booted Snap-On Adapter

Provides tethered USB client connectivity. Compatible with hand strap, battery pack and scan handle. Charges mobile computer battery in four hours or less. Kit includes snap-on adapter with convertible adapter. Optional 50130570-001 (5 V, 2 A) USB power wall adapter sold separately.



CT40-VD-CNV

CT40 Booted and Non-Booted Vehicle Dock

For charging CT40 with or without a convertible adapter, compatible with hand strap. NFC tag integrated for seamless pairing with mobile computer. Kit includes vehicle dock with convertible adapter. Optional cigarette lighter power adapter cable sold separately.



CT40-CIGR-0

Cigarette Snap-On Adapter

Cigarette lighter adapter with USB SKT.



50138169-001

Cigarette Lighter Power Adapter Cable

Cigarette lighter power adapter, 1.8 mm (0.07 in).



805-638-001

RAM Mount

Required for vehicle dock or vehicle holder. Consists of one 12.07 cm (4.75 in) adjustable pivot arm with two 3.8 cm (1.5 in) stainless steel balls and assembly hardware. Requires customer-supplied hardware to secure mount to vehicle.



CT40-HDST-35MM

PTT Headset

Enterprise headset with PTT function, 3.5 mm (0.14 in), 1.8 m (5.9 ft) length.



CT40-CVT-25MM

Audio Cable

3.5 mm (0.14 in) plug to 2.5 mm (.1 in) socket adapter wire.



CT40-UCP-B

CT40 Booted Universal Cup

For one computer with protective boot. Dock, power supply and cables must be ordered separately.



CT40-UCP-N

CT40 Non-Booted Universal Cup

For one computer (no protective boot). Dock, power supply and cables must be ordered separately.



CT40-UCP-BHC

CT40 HC Booted Universal Cup

For one CT40 HC with protective boot. Dock, power supply and cables must be ordered separately.



CT40-UCP-NHC

CT40 HC Non-Booted Universal Cup

For one CT40 HC (no protective boot). Dock, power supply and cables must be ordered separately.

POWER SUPPLY



318-055-011

Spare Battery Pack

CT40 battery pack, 4020 mAh, for use with CT40 configurations with plastic battery latch button (last two digits in part number begin with **0**: CT40-L*N-xxxx**0**x).



318-055-067

Spare Battery Pack

CT40 and CT40 XP battery pack (replacing 318-055-015), 4020 mAh, for use with CT40 or CT40 XP configurations with metal battery latch button (last two digits in part number begin with **A** or **B**: CT40x-LON-xxxx**A**x or CT40x-L1N-xxxx**B**x).



318-055-H67

Spare Battery Pack

CT40 HC and CT40 XP HC battery pack (replacing 318-055-017), 4020 mAh, for use with CT40 HC and CT40XP HC.



318-055-D67

Spare Battery Pack

CT40 disinfectant ready battery pack, 402 mAh, for use with CT40 disinfectant-ready configurations.



50121666-001

Desktop Power Supply

36 W power supply for use with Ethernet home base, charge-only home base and quad battery charger. Requires country-specific line cord to be ordered separately.



50121667-001

Quad Base Power Supply

84 W power supply for use with four-bay charging base and four-bay net base. Requires country-specific line cord to be ordered separately.



50130570-001

Power Plug Adapter Kit

USB power adapter (5 V, 2 A) kit for snap-on adapter. Includes EU, UK, U.S. and IN plugs.

CBL-500-120-S00-05

USB Cable

Charging and USB communication cable, USB Type A to Type C, 1.2 m (3.9 ft).

SCAN HANDLES



CT40-SH-DC

Scan Handle, Compatible with Charging Dock

Snaps easily on or off the mobile computer. Compatible with charging docks, hand strap and snap-on adapter.



CT40-SH-PB

Scan Handle and TPU Boot

Kit includes CT40 scan handle and TPU boot. Compatible with all booted charging docks.

SOFT GOODS



825-238-001

Holster

Holster suitable for use with CT40, CT50 and CT60.



CT40-RB-00

Rubber Boot

Black rubber protective boot for CT40.



CT40-PB-XP

Hard Protective Boot

CT40 and CT40 XP protective boot (replacing CT40-PB-00). For use with CT40 booted accessories, including charging docks, display dock, booted scan handle and wearables.



825-237-001

Pouch

Pouch suitable for use with CT40, CT50 and CT60.

ACCESSORIES



CT40-HS-3PK

Kit, Hand Strap (3/pk)

Kit of three replacement hand straps for CT40.



CT40-HS-HC

Healthcare Hand Strap (3/pk)

Manufactured with disinfectant-ready material. Can be cleaned by approved disinfectant agents.



CT40-SP-1PK

Screen Protector (1/pk)

One self-adhesive screen protector.

CT40-QL-00

Quad Lock Case

Quad lock case to mount CT40 on Zebra RFD8500 RFID sled with quad lock.

856-065-004

Industrial-Grade Micro-SD Card

Micro-SD card, 1 GB, AF1GUDI, RoHS

Note: Micro-SD cards are required when databases are stored on the device. The database should be stored on the SD card.

856-065-005

Industrial-Grade Micro-SD Card

Micro-SD card, 2 GB, AF1GUDI, RoHS

Note: Micro-SD cards are required when databases are stored on the device. The database should be stored on the SD card.

856-065-006

Industrial-Grade Micro-SD Card

Micro-SD card, 4 GB, AF1GUDI, RoHS

Note: Micro-SD cards are required when databases are stored on the device. The database should be stored on the SD card.

856-065-007

Industrial-Grade Micro-SD Card

Micro-SD card, 8 GB, AF1GUDI, RoHS

Note: Micro-SD cards are required when databases are stored on the device. The database should be stored on the SD card.

AC LINE CORDS

50127245-001

Power Cord (India)

Power cord, India, 1.5 m (4.9 ft).

50117501-001

Power Cord (Australia)

Power cord, Australia, 2.5 m (8.2 ft).

50117503-001

Power Cord (CB)

Power cord, Argentina, Isled CB.

77900506E

Power Cord (U.S.)

Power cord, United States, IEC320-C13, 1.85 m (6.07 ft).

77900507E

Power Cord (UK)

Power cord, United Kingdom, IEC320-C13, 2.5 m (8.2 ft).

77900508E

Power Cord (EU)

Power cord, Europe, IEC320-C13, 2.5 m (8.2 ft).

19-19807

Power Cord (China)

Cable, China cord set (CCC), 2.5 m (8.2 ft).

19-19726

Power Cord (U.S.)

Cable, power cord/IEC, U.S., 2.5 m (8.2 ft).

For more information

www.honeywellaidc.com

**Honeywell Safety and
Productivity Solutions**

300 S Tryon St Suite 500

Charlotte, NC 28202

800-582-4263

www.honeywell.com

CT40 and CT40 XP Mobile Computer Accessories Guide A4 | Rev B | 10/20
© 2020 Honeywell International Inc.

Honeywell