

Datasheet

Symbol Power Injector

24 Volt Single Power Injector

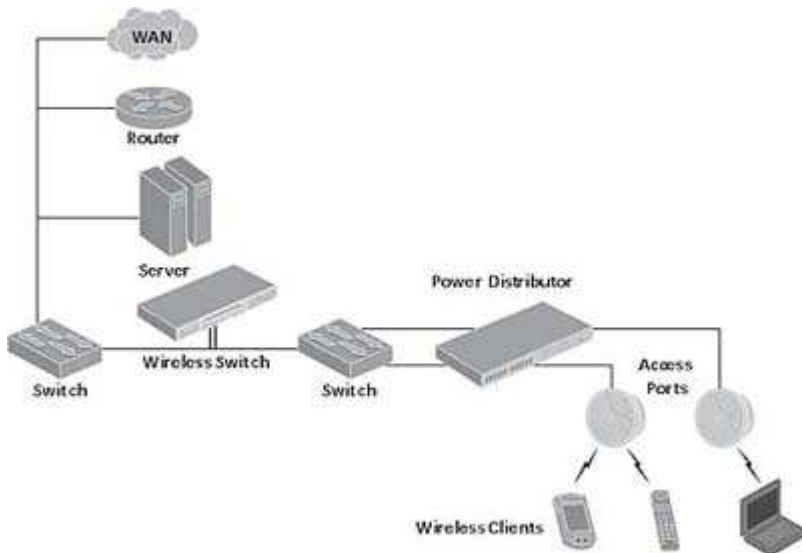
Symbol Wireless Switch Power-over-Ethernet Solutions Save Labor and Costs

Power distribution solutions from Symbol Technologies deliver operating power and data to Symbol Spectrum24® Access Points and Access Ports via standard Ethernet cabling, simplifying installation and eliminating the need to run separate power lines to each access point or port location.

Whether in a warehouse, factory floor, or enterprise facility, running power to difficult-to-reach locations or to support changing network layouts can lead to excessive costs, as well as disruptions in time and labor operations. Symbol power distribution solutions significantly reduce cabling and outlet requirements—especially in hard-to-reach locations such as ceilings—and streamline wireless infrastructure deployment, lowering costs while protecting your Category 5 and Ethernet switch investment.

12-Port Power Injector for 802.3af

The 12-Port Power Injector installs conveniently in your wiring closet rack. Easy to access interfaces on the front panel distributes IEEE 802.3af-compliant power for up to twelve Access Ports. The 19 in./48 cm form factor requires minimal rack space and the Advanced Auto Sensing discovery feature detects Power-over-Ethernet enabled access points before supplying in-line power. When used in conjunction with a centralized UPS, the Power-over-Ethernet Hub can provide uninterrupted availability of power to your wireless LAN—even in the event of power failure.



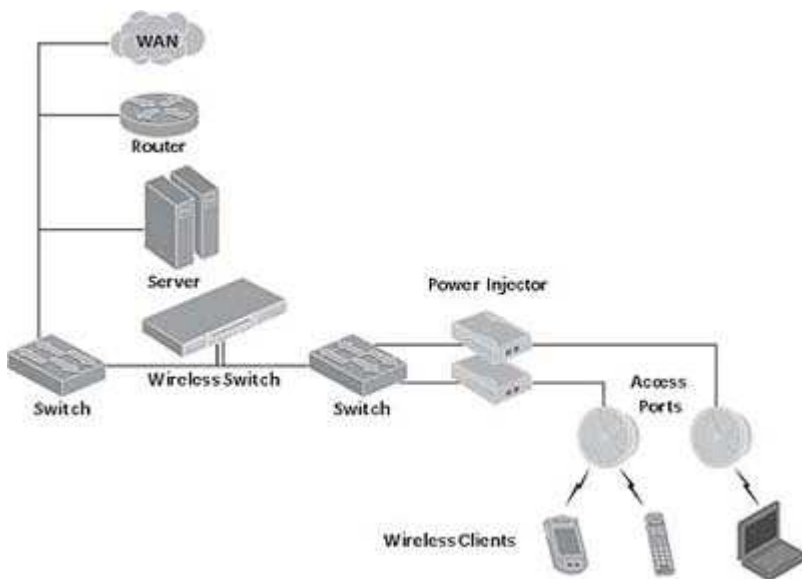
12-Port Power Injector Specification Highlights

Physical Characteristics	
Dimensions:	11.9 in. L x 17 in. W x 1.75 in. H/302 mm L x 433 mm W x 44 mm H
Weight:	8.8 lbs/4.0 Kg
Mounting Options:	Desktop or 19" Rack-Mount
Indicators:	System Indicator: AC Power (Green), Alarm (Orange) User Indicator: Channel Power (Green), Alarm (Orange)
Number of Ports:	12
Port Types:	10/100 Mbps
Part Number:	AP-PSBIAS-T-12-AF
Environmental Conditions	
Operating Temperature:	32° to 104° F/0° to 40° C
Operating Humidity:	10 to 90% (no condensation allowed)
Storage Temperature:	-4° to 158° F/-20° to 70° C
Storage Humidity:	10 to 90% (no condensation allowed)
Operating Altitude:	0.34 to 10,000 ft./-400 to 3048 m
Thermal Rating	
Thermal Rating:	Vin=100VAC @ Full Load
Input Specifications	
AC Input Voltage:	90 to 264 VAC (47-63 Hz)
DC Input Voltage:	DC Power Supply Input: -46 to -57 VDC
Input Current:	At 110 VAC: 0.34 A (max) At 220 VAC: 0.17 A (max)
Connectors:	Shielded RJ-45, EIA 568A and 568B, DB-9 Female
Output Specifications	
Pin Assignments:	Power Feeding 4/5, 7/8
Nominal Output Voltage (per Access Port):	44 to 52 VDC
Total Max Output Power:	16.8 W per Access Port (15.4 W min.)
Compatibility	
Supported Products:	Access Port; 802.3af-based devices
Regulatory	
Compliance:	CE Compliance
Electromagnetic Emission:	FCC Part 15 Class B/ICES 003 Class B, EN55022 Class B, EN55024
Safety:	UL 60950, CSA C22.2 No. 60950, EN60950/IEC 950, CB Certification

Power Injector for 802.3af



The single-port Power Injector provides the benefits of Power-over-Ethernet for individual Symbol Access Ports. The Power Injector connects to your Ethernet switch and power and data is then transmitted to the Access Port via the Ethernet cable. The Power Injector supplies effective independent overload and short circuit protection per port. The Power Injector provides a cost-effective power solution for your small-site deployment by supplying power directly to Access Ports from a central location using current LAN infrastructure.



Power Injector Specification Highlights

Physical Characteristics	
Dimensions:	1.51 in. H x 4.17 in. W x 5.51 in. D/38.5 mm H x 106 mm W x 140 mm D
Weight:	0.55 lbs/250 g
Mounting Options:	Desktop
Indicators:	System Indicator: Main Power Indications (Green LED) User Indicator: Port Status Indications (Green and Orange LEDs)
Number of Ports:	1
Port Types:	10/100 Mbps
Part Number:	AP-PBIAS-T-1P-48
Environmental Conditions	
Operating Temperature:	32° to 122° F/0° to 50° C
Operating Humidity:	10 to 90% (no condensation allowed)
Storage Temperature:	-4° to 158° F/-20° to 70° C
Storage Humidity:	10 to 90% (no condensation allowed)

Input Specifications	
Input Voltage:	90 to 264 VAC (47-63 Hz)
Input Inrush Current:	110 to 240 VAC (60-50 Hz)
Input Current:	At 110 VAC: 0.34 A (max) At 220 VAC: 0.17 A (max)
Input (Data in):	RJ-5 female socket
Output Specifications	
Output (Data & Power out):	Ethernet 10/100Base-T, plus 48 VDC (RJ-5 female socket, with DC voltage on wire pairs 7-8 and 4-5)
Nominal Output Voltage:	44 to 52 VDC
Output Power:	10 W
Compatibility	
Supported Products:	Access Port; Spectrum24 41x1 Access Point; Spectrum24 FH 302X (when used with Power Converter)
Regulatory	
Compliance:	CE Compliance
Electromagnetic Emission:	FCC Part 15 Class B/ICES 003 Class B, EN55022 Class B, EN55024
Safety:	UL 60950, CSA C22.2 No. 60950, EN60950/IEC 950, CB Certification